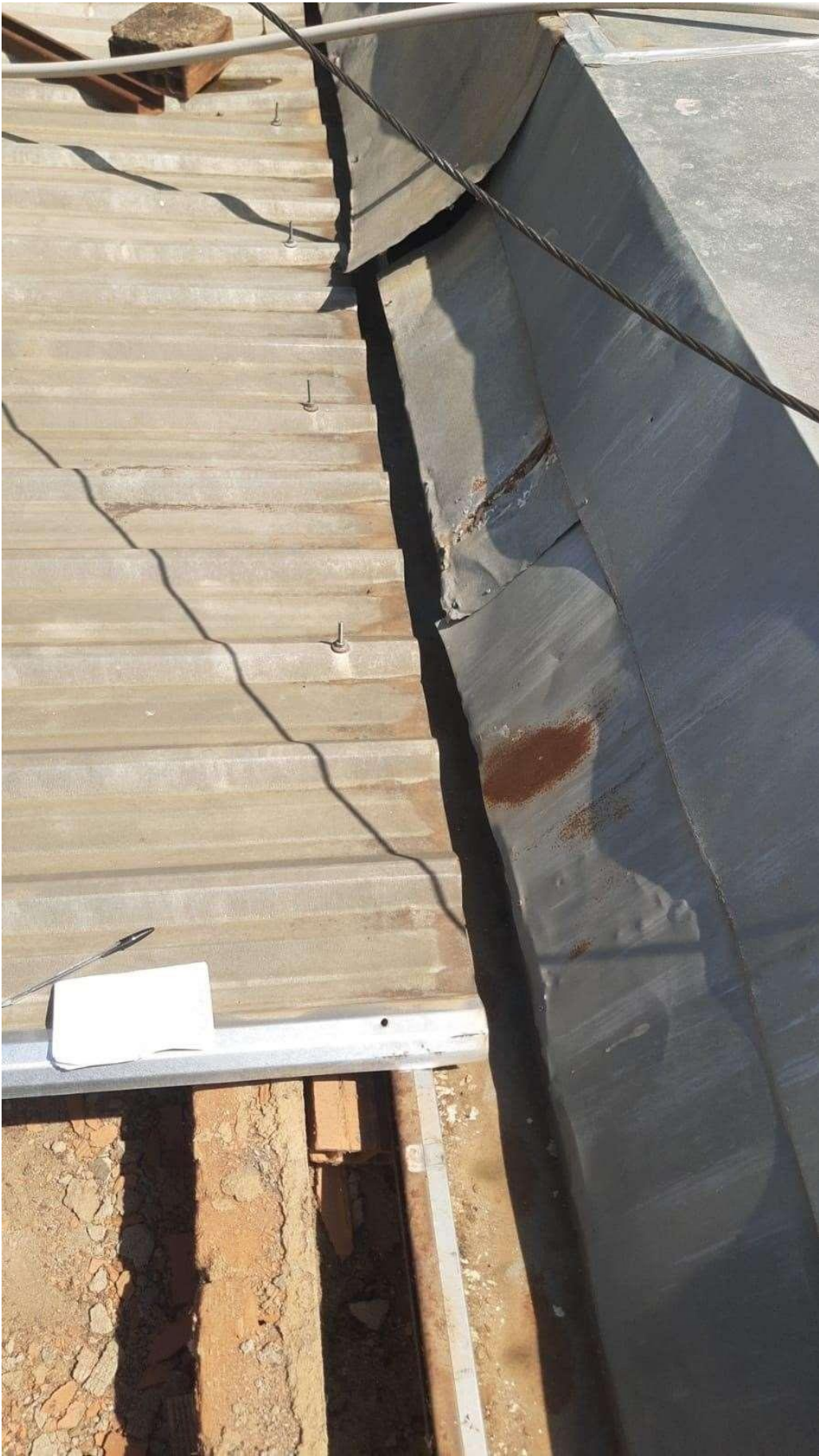


# RELATÓRIO FOTOGRÁFICO

## CÂMARA MUNICIPAL DE RAUL SOARES

COORDENADAS: 20°06'03.4"S 42°27'09.8"W

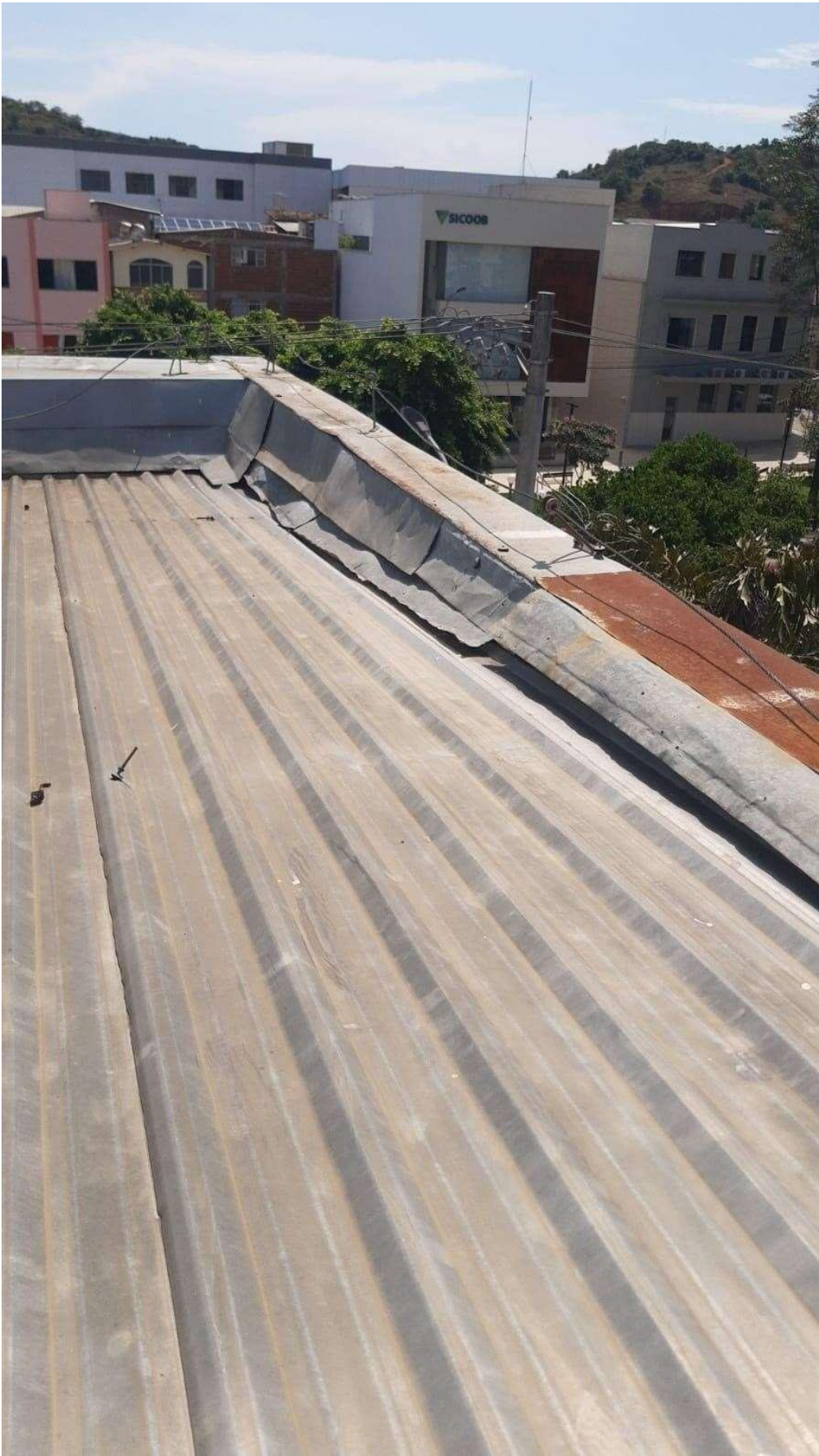


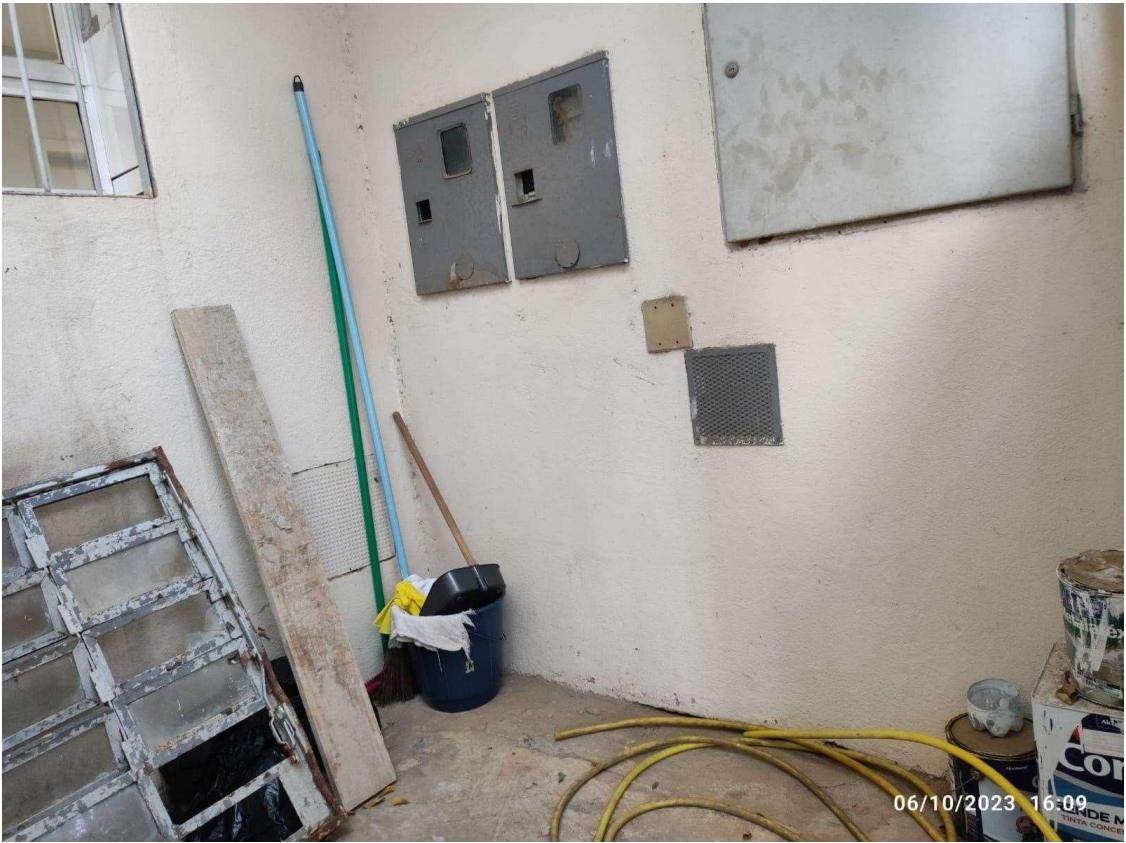


















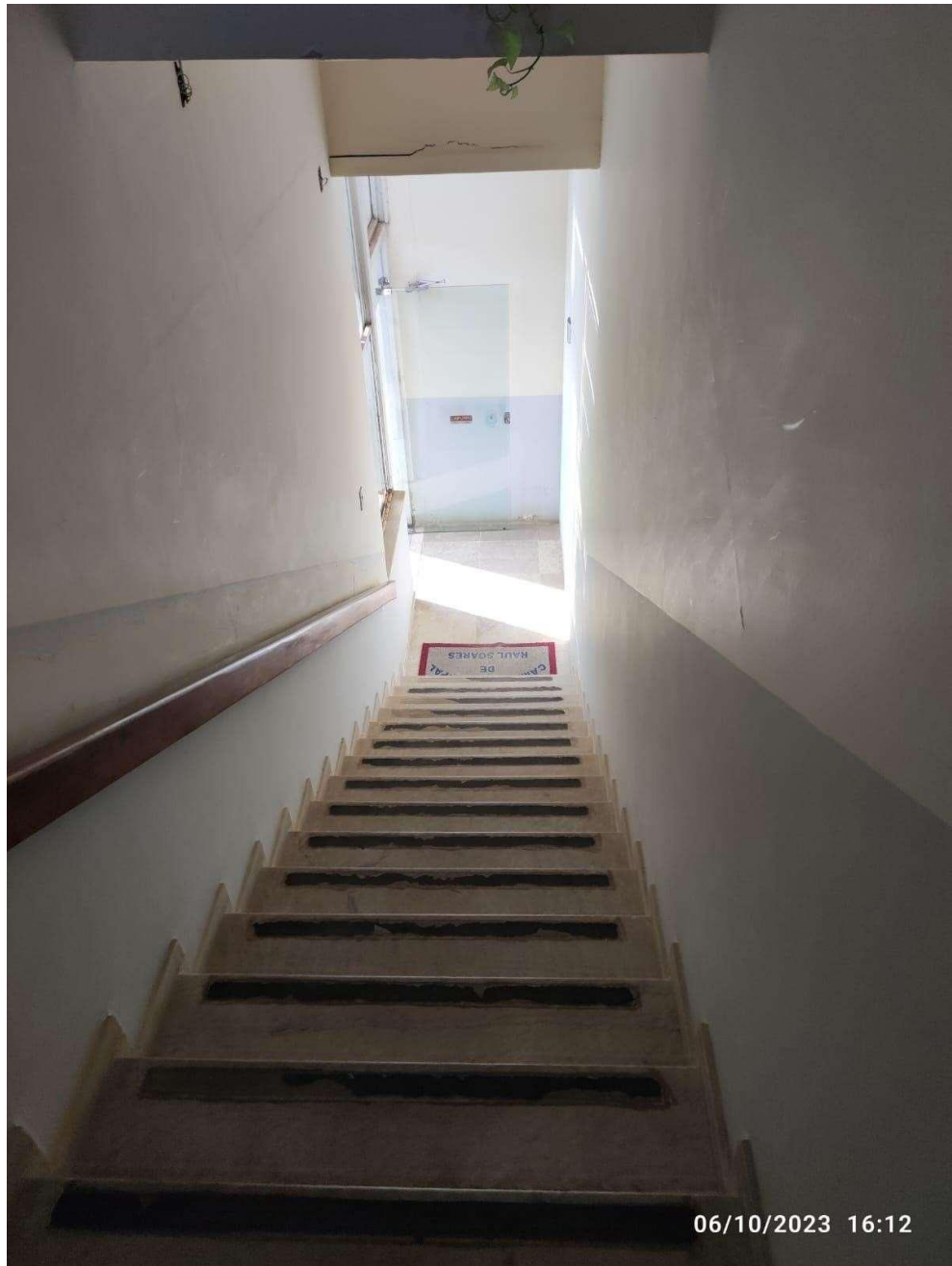












06/10/2023 16:12







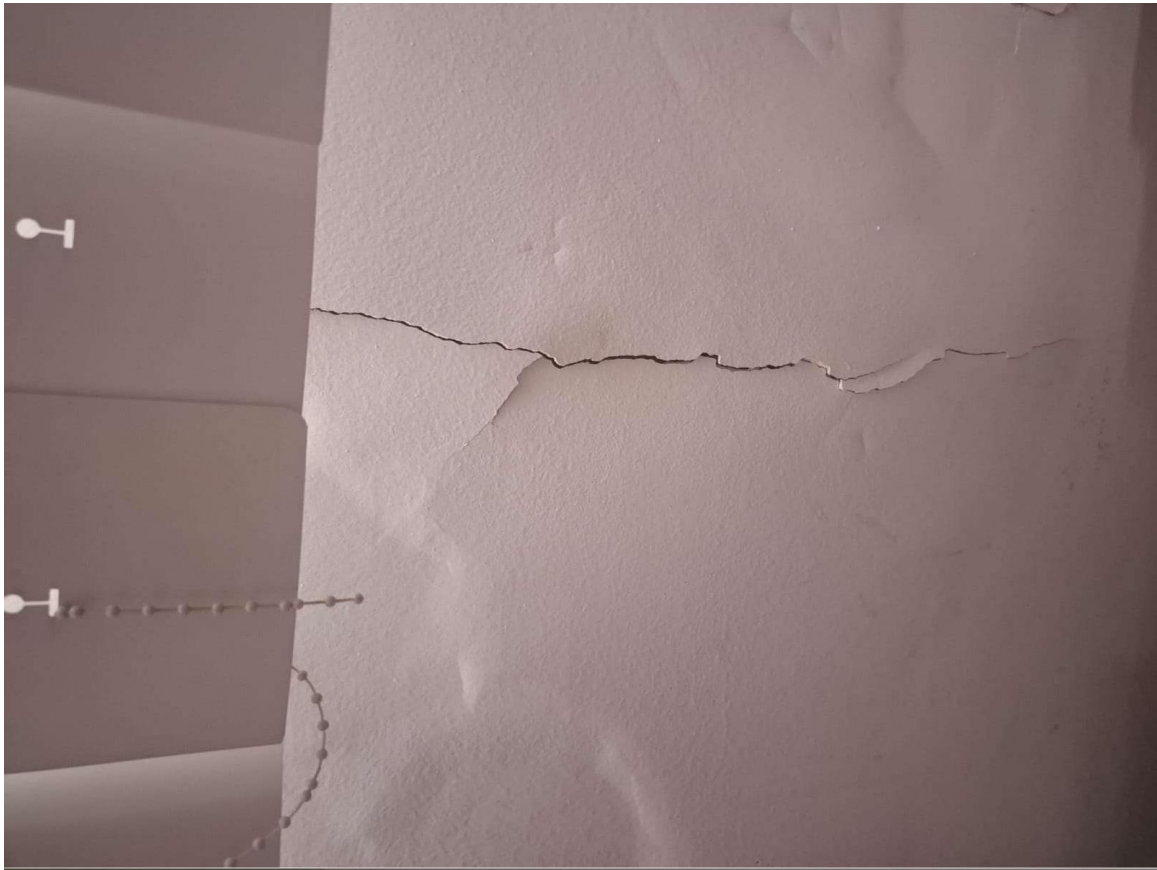
06/10/2023 16:38







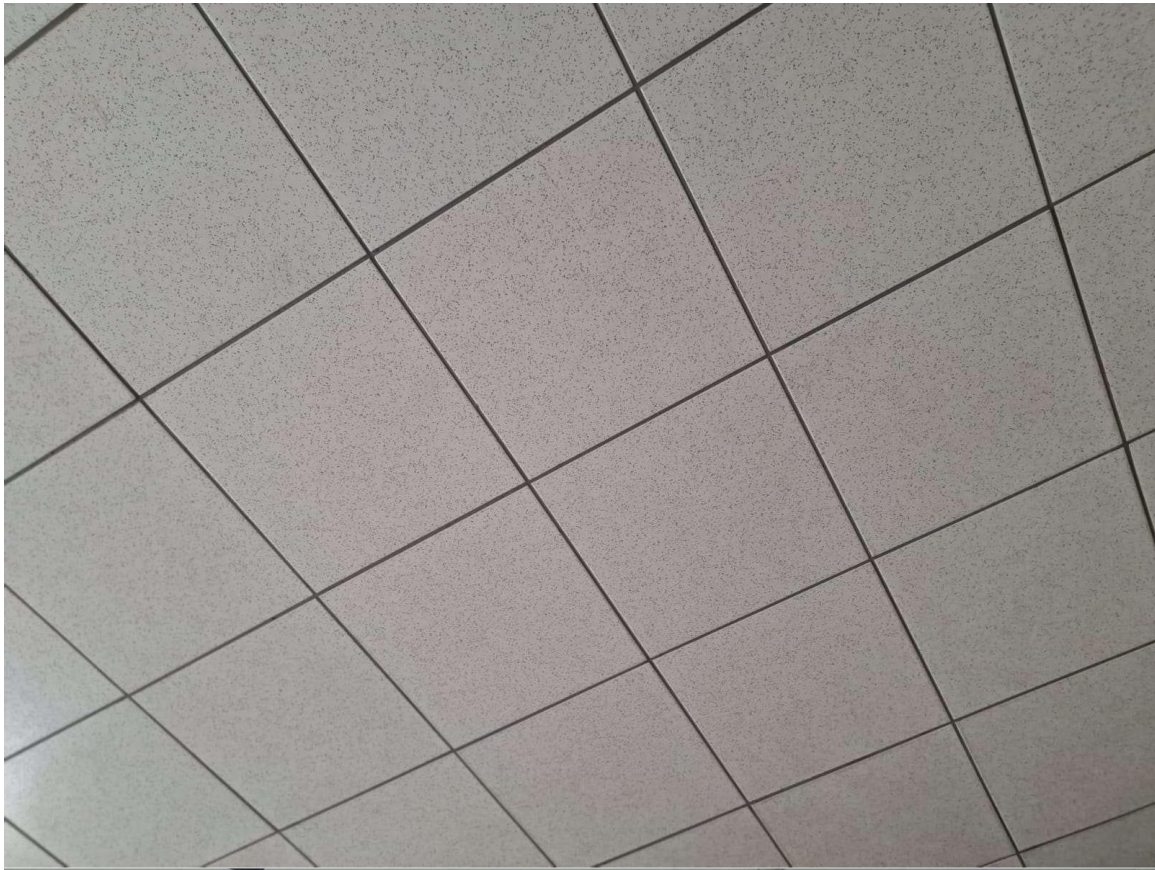




















---

Marcio Flavio Cazarim Junior  
Engenheiro Civil  
CREA-MG: 326697